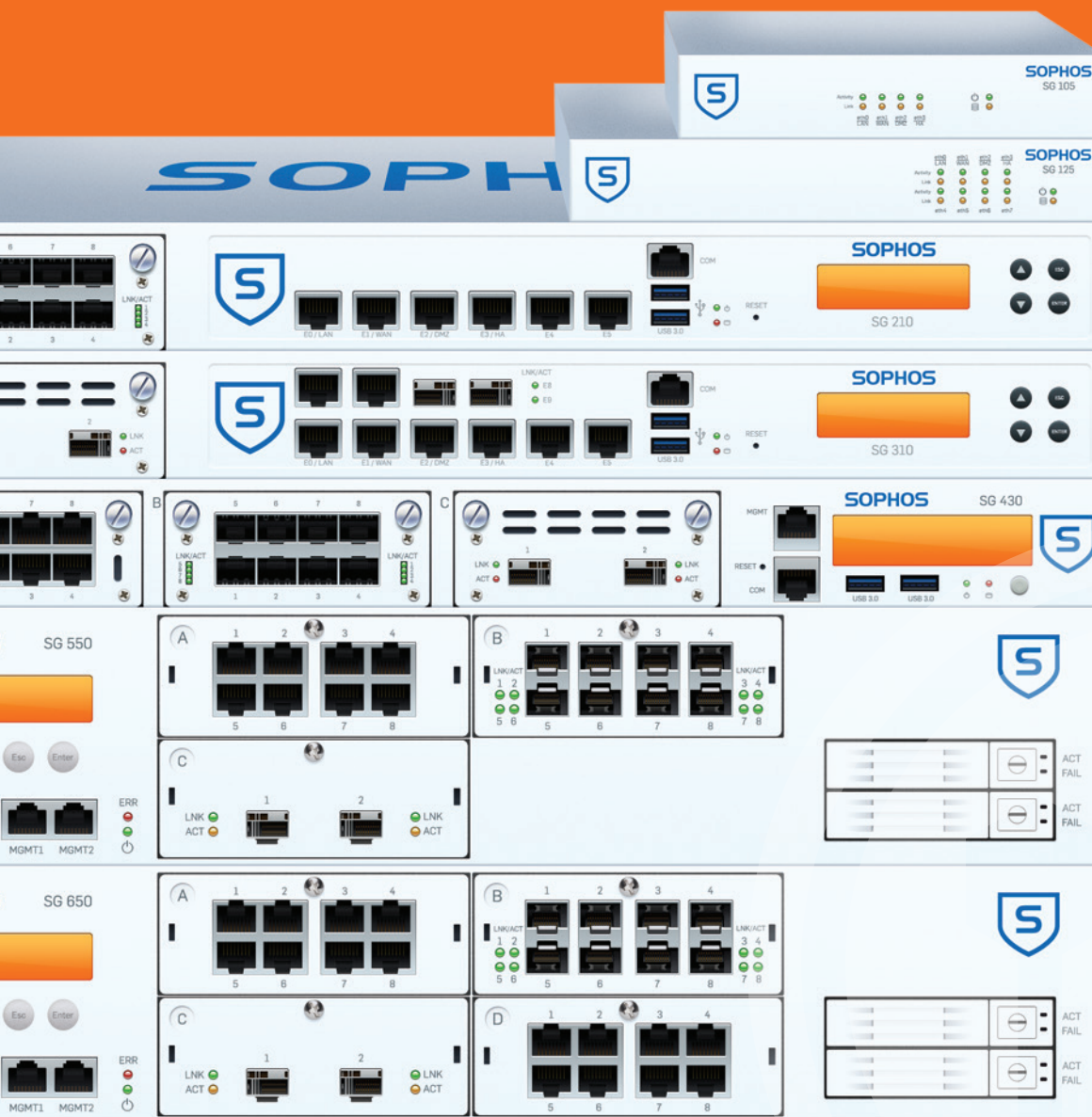


# Sophos SG Series Appliances

Unleash the full potential of your network

With bandwidth requirements constantly increasing, network security appliances need to do more than ever before. The Sophos SG Series appliances are built to provide optimal performance, versatility and efficiency to meet all your security needs.



# Unleash the full potential of your network

The Sophos SG Series appliances are designed to provide the optimal balance between performance and protection – for diverse IT environments. Whether you need a solution for a small remote office, want to protect your school campus, or are a global organization requiring high-availability and enterprise-grade features, our SG Series appliances are an ideal fit.

## Versatile

### Appliances to suit every environment

Our broad product line-up makes it easy for you to choose the right appliance. A higher model number indicates higher throughput and an increased number of ports or connectivity options.

And as every software subscription is available on every appliance, you can flexibly size the solution to fit your budget and your individual security needs. Next-generation firewall features or all-in-one security on a single box, it's your choice.

## Rapid

### Proven performance on all models

Our appliances are built upon the most advanced Intel technology. Optimized use of multi-core processors allows consolidation of your security solutions without a performance trade-off.

With faster than ever firewall, IPS and VPN throughput, our SG Series appliances effortlessly handle multiple tasks simultaneously. Plus, you can easily scale up by dynamically clustering up to 10 units without external load balancers.

## Responsive

### Technology built to process data in real-time

Your network is constantly changing so your protection needs to be adaptive. All our appliances have integrated high-speed hard drives (in many cases SSDs) for local storage of spam quarantine data and faster access to comprehensive reports and real-time logs.

Accelerated in-memory content scanning in secure proxy mode makes your defenses more effective and efficient.

## Reliable

### Engineered for business – today and tomorrow

Using the latest Intel technology, our products provide the utmost in flexibility. Add to your protection as you need it - without changing or upgrading your hardware. That means you benefit from future software and performance enhancements which guarantees the best possible value for money.

Redundancy features such as an additional hard-drive or power supply are available on the 1U SG 450 and on both of our 2U appliances.

## Modular

### Flexible configuration options on many models

Configure your hardware to suit your infrastructure and change it as and when you need to. Our optional Flexi Port LAN modules give you the freedom to select the connectivity you need – copper, fiber, 10GbE – you decide.

Flexi Port modules are interchangeable within a range, e.g. 1U, so, for example, you can use the same module with all of your 1U appliances which saves you money if you upgrade to a higher model at a later date.

## Connected

### Full wireless coverage – for every office

Our SG 100 Series desktop models with integrated wireless are a very tidy solution for even the most compact office space. As the access point is built in, you do not require any extra hardware. Should you need additional coverage or have a larger space, you can add Sophos access points.

Every one of our appliances has a built-in wireless controller for you to connect Sophos access points and manage them simply from your central management console.

# SG Series Appliances

The Sophos SG Series portfolio of firewall appliances offers you a choice of sixteen models, including four with integrated wireless LAN.

## Small - Desktop

**1U performance, desktop form factor and price with optional integrated wireless**

- › SG 105, SG 105w, SG 115, SG 115w
- › SG 125, SG 125w, SG 135, SG 135w

Ideal for small businesses, branch offices, remote locations and retail.

## Medium – 1U rackmount

**Unrivalled performance, unmatched flexibility**

- › SG 210, SG 230
- › SG 310, SG 330
- › SG 430, SG 450

Ideal for medium-sized offices and distributed organizations.

## FleXi Port modules available for 1U appliances

8 port GbE copper FleXi Port module  
(for SG 2xx/3xx/4xx only)



8 port GbE SFP FleXi Port module  
(for SG 2xx/3xx/4xx only)



2 port 10 GbE SFP+ FleXi Port module  
(for SG 2xx/3xx/4xx only)



## Large – 2U rackmount

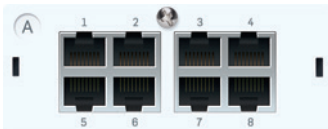
**Ultimate connectivity and performance**

- › SG 550
- › SG 650

Ideal for larger branch offices and medium to large organizations.

## FleXi Port modules available for 2U appliances

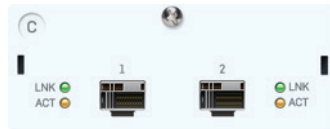
8 port GbE copper FleXi Port module  
(for UTM/SG 5xx/6xx only)



8 port GbE SFP FleXi Port module  
(for UTM/SG 5xx/6xx only)



2 port 10 GbE SFP+ FleXi Port module Rev.2  
(for SG 550/650 only)



# SG Series Appliances - at a glance

## Product Matrix

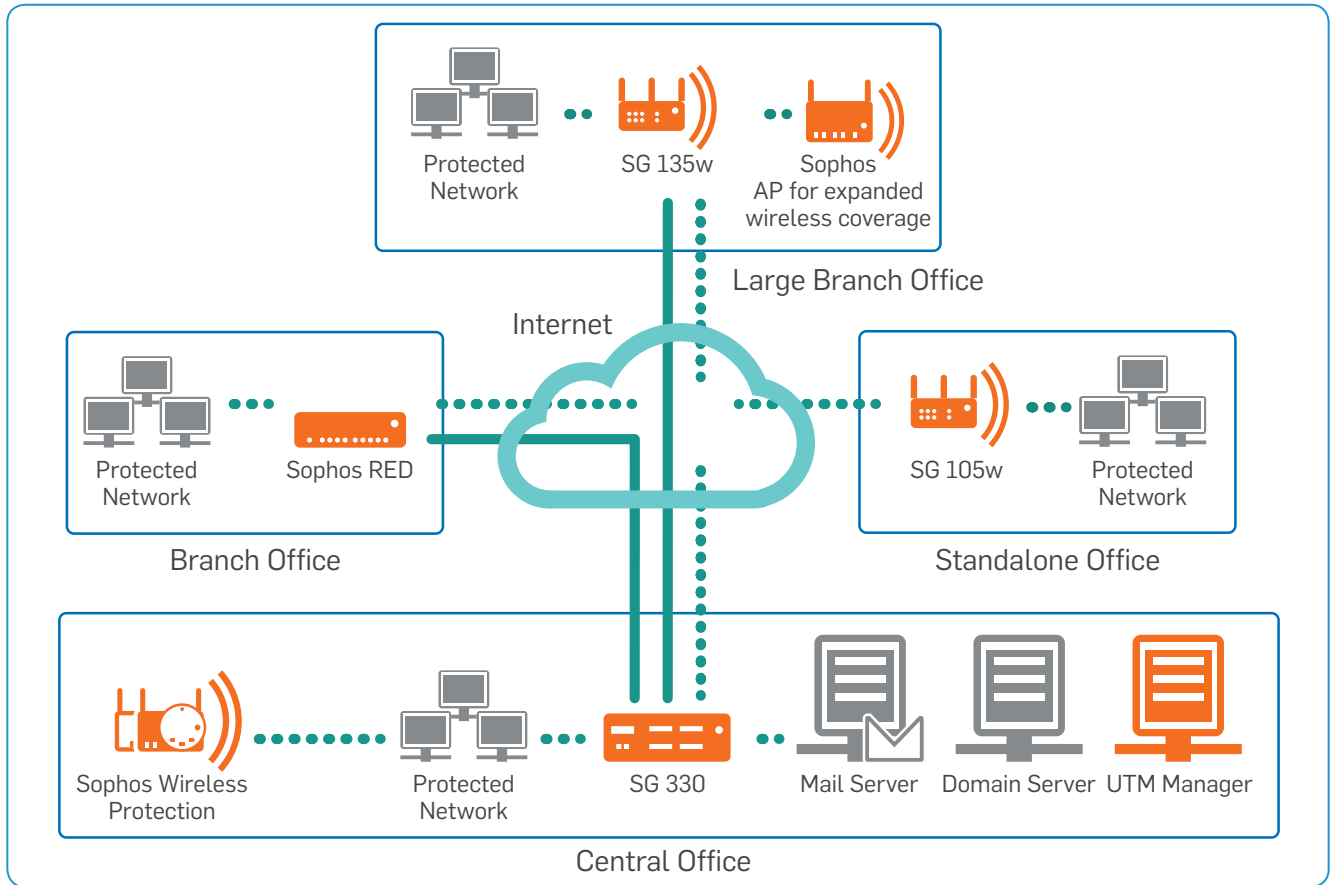
Model	Form Factor	Tech. Specs					Throughput			
		Maximum Network Ports (GE)	WiFi	Storage (GB)	RAM (GB)	Swappable Components	Firewall (Mbps)	VPN (Mbps)	IPS (Mbps)	AV-proxy (Mbps)
<b>SG 105(w)</b>	desktop	4	optional with 802.11 a/b/g/n	320	2	n/a	1,500	325	350	90
<b>SG 115(w)</b>	desktop	4	optional with 802.11 a/b/g/n	320	4	n/a	2,300	425	500	120
<b>SG 125(w)</b>	desktop	8	optional with 802.11 a/b/g/n/ac	320	4	n/a	3,100	500	750	200
<b>SG 135(w)</b>	desktop	8	optional with 802.11 a/b/g/n/ac	320	6	n/a	6,000	1,000	1,500	350
<b>SG 210</b>	1U	14 (6 + 1 module)	n/a	320	8	n/a	11,000	1,000	2,000	500
<b>SG 230</b>	1U	14 (6 + 1 module)	n/a	120 GB SSD	8	n/a	13,000	2,000	3,000	800
<b>SG 310</b>	1U	18 (8 + 2SFP + 1 module)	n/a	180 GB SSD	12	n/a	17,000	3,000	5,000	1,200
<b>SG 330</b>	1U	18 (8 + 2SFP + 1 module)	n/a	180 GB SSD	12	n/a	20,000	4,000	6,000	1,500
<b>SG 430</b>	1U	24 (8 + 2 modules)	n/a	240 GB SSD	16	n/a	25,000	4,000	7,000	2,000
<b>SG 450</b>	1U	24 (8 + 2 modules)	n/a	2*240 GB SSD (RAID-1)	16	opt. Power	27,000	5,000	8,000	2,500
<b>SG 550</b>	2U	24 (8 + 2 modules)	n/a	2*300 GB SSD (RAID-1)	24	Power, SSD	40,000	8,000	12,000	3,500
<b>SG 650</b>	2U	32 (8 + 3 modules)	n/a	2*480 GB SSD (RAID-1)	48	Power, SSD	60,000	10,000	16,000	5,000

This is what you get with every Sophos SG Series firewall:

- › The latest Intel multi-core technology for optimal performance and efficiency
- › The same security features available on every size of appliance
- › Built-in HDD or SSD as storage for local quarantine data, logs and reporting
- › Flexi Port modules available for all 1U and 2U appliances (interchangeable within a range, e.g. 1U)
- › Free Sophos UTM Manager (SUM) to manage multiple appliances
- › Possibility to dynamically cluster up to 10 appliances of the same kind – without external load balancers

# SG Series Appliances - Small

These desktop firewalls offer exceptional performance for models in this class and are available with the same broad set of security features as all our other appliances. The following diagrams show typical deployments in this range using both integrated wireless LAN and external access points.



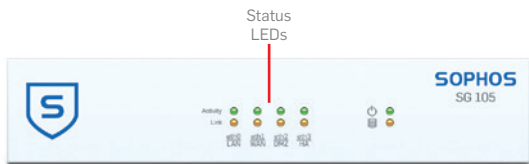
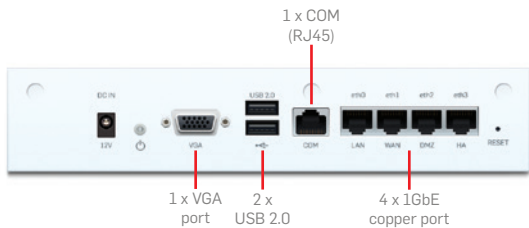
A typical deployment scenario using the SG 135w and SG 105w as part of a distributed organization.

# SG Series Appliances:

## SG 105, SG 105w, SG 115, SG 115w

### Technical Specifications

These desktop firewall appliances offer an excellent price-to-performance ratio making them ideal for budget-conscious small businesses or branch offices. They are available with or without integrated wireless LAN, so you can even have an all-in-one network security and hotspot solution without the need for additional hardware. Of course, you can also add external access points. With Intel multi-core technology designed for best performance and efficiency in a small form factor, these models come equipped with 4 GbE copper ports built-in. You can choose between our lower cost BasicGuard subscription; select the software modules of your choice; or choose FullGuard for the full set of security features.


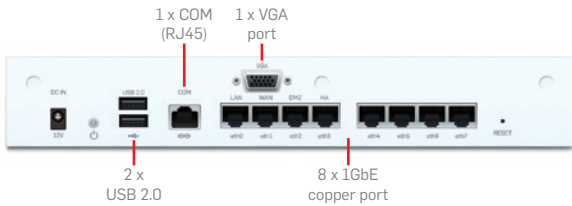
Front View		Performance	SG 105(w)	SG 115(w)
		Firewall throughput	1.5 Gbps	2.3 Gbps
		VPN throughput	325 Mbps	425 Mbps
		IPS throughput	350 Mbps	500 Mbps
		Antivirus throughput (proxy)	90 Mbps	120 Mbps
		Concurrent connections	1,000,000	1,000,000
		New connections/sec	15,000	20,000
		Maximum licensed users	unrestricted	unrestricted
<b>Wireless Specification (SG 105w and SG 115w only)</b>				
		No. of antennas	3 external	3 external
		MIMO capabilities	3 x 3:3	3 x 3:3
		Wireless interface	802.11a/b/g/n (2.4 GHz / 5 GHz)	802.11a/b/g/n (2.4 GHz / 5 GHz)
Back View		Physical interfaces		
		Hard drive (local quarantine/logs)	integrated HDD	integrated HDD
		Ethernet interfaces (fixed)	4 GE copper	4 GE copper
		I/O ports (rear)	2 x USB 2.0 1 x COM (RJ45) 1 x VGA	2 x USB 2.0 1 x COM (RJ45) 1 x VGA
		Power supply	External auto ranging DC: 12V, 100-240VAC, 50-60 Hz	External auto ranging DC: 12V, 100-240VAC, 50-60 Hz
Physical specifications		Environment		
Mounting	Rackmount kit available (to be ordered separately)	Power consumption	4.83W, 16.468 BTU/hr (idle) 9.84W, 33.55 BTU/hr (full load)	
Dimensions Width x Depth x Height	225 x 150 x 44 mm 8.86 x 5.91 x 1.73 inches	Operating temperature	0-40°C (operating) -20 to +80°C (storage)	
Weight	1.19 kg / 2.62 lbs (unpacked) 2.185 kg / 4.82 lbs (packed)	Humidity	10%-90%, non-condensing	
Safety Certifications				
Certifications		CE, FCC Class B, CB, VCCI, C-Tick, UL, CCC		

# SG Series Appliances:

## SG 125, SG 125w, SG 135, SG 135w

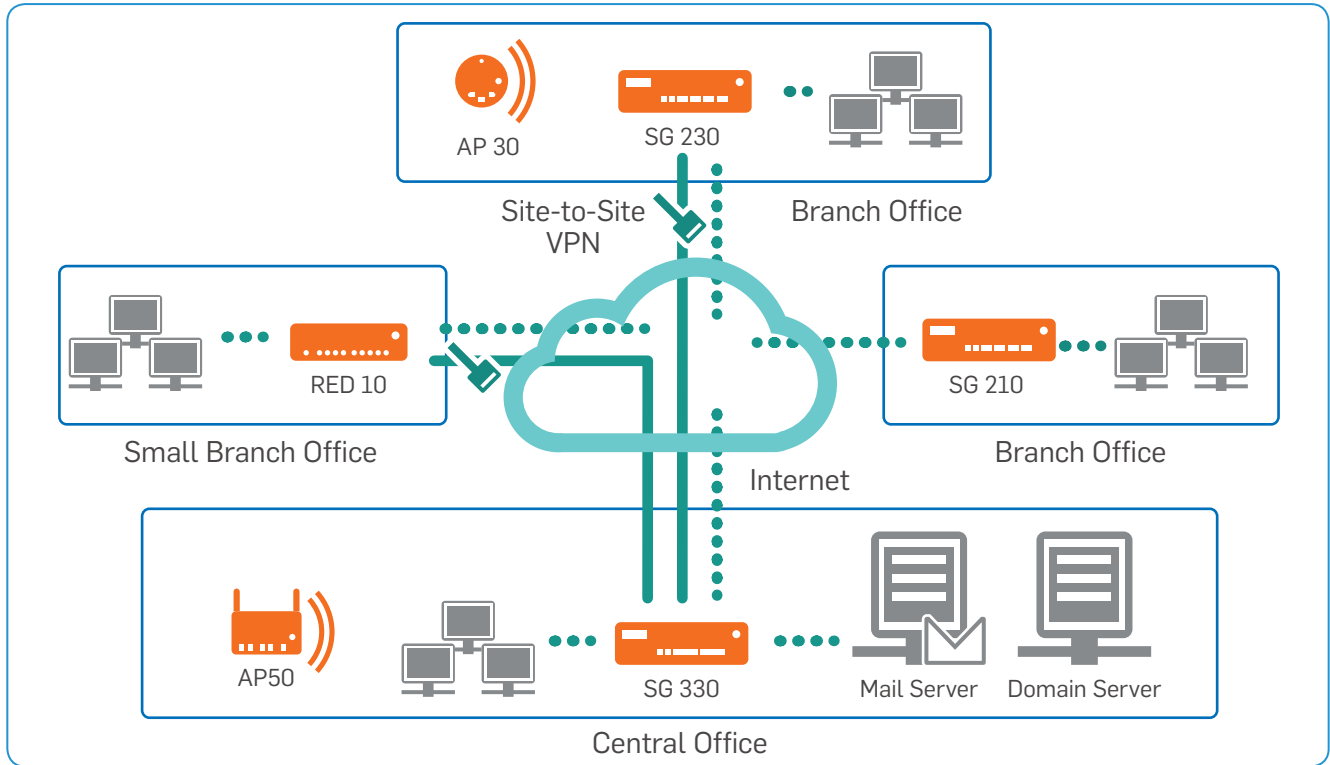
### Technical Specifications

These powerful firewall appliances offer 1U performance with a desktop form factor and price. If you have a small business or branch offices to protect and are working on a tight budget, these models are the ideal choice. They are also available with integrated 802.11ac wireless LAN for optimal coverage and connectivity for your mobile workers. Built upon the latest Intel architecture, our software makes optimal use of the multi-core technology to provide excellent throughput for all your key processes. These models come equipped with 8 GbE copper ports built-in and, as with all our firewalls, up to 10 appliances can be dynamically clustered for greater scalability.

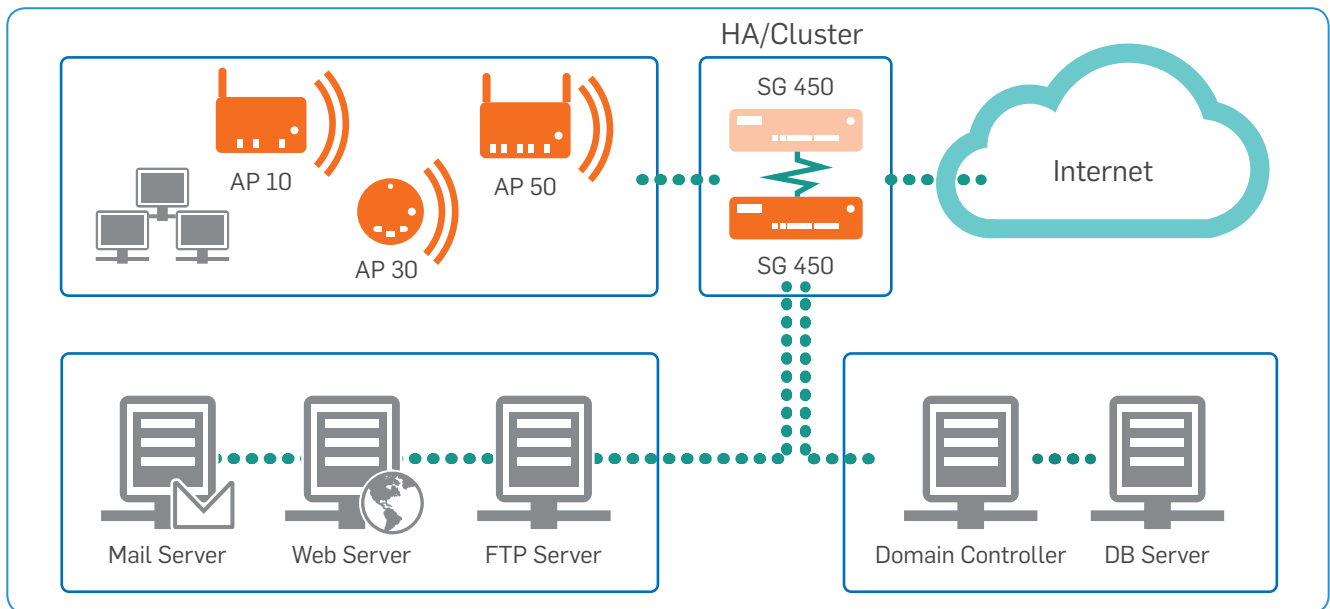
Front View		Performance	SG 125(w)	SG 135(w)
		Firewall throughput	3.1 Gbps	6 Gbps
		VPN throughput	500 Mbps	1 Gbps
		IPS throughput	750 Mbps	1.5 Gbps
		Antivirus throughput (proxy)	200 Mbps	350 Mbps
		Concurrent connections	2,000,000	2,000,000
		New connections/sec	24,000	36,000
		Maximum licensed users	unrestricted	unrestricted
<b>Wireless Specification (SG 125w and SG 135w only)</b>				
		No. of antennas	3 external	3 external
		MIMO capabilities	3 x 3:3	3 x 3:3
		Wireless interface	802.11a/b/g/n/ac (2.4 GHz / 5 GHz)	802.11a/b/g/n/ac (2.4 GHz / 5 GHz)
Back View		Physical interfaces		
		Hard drive (local quarantine/logs)	integrated HDD	integrated HDD
		Ethernet interfaces (fixed)	8 GE copper	8 GE copper
		I/O ports (rear)	2 x USB 2.0 1 x COM (RJ45) 1 x VGA	2 x USB 2.0 1 x COM (RJ45) 1 x VGA
		Power supply	External auto ranging DC: 12V, 100-240VAC, 50-60 Hz	External auto ranging DC: 12V, 100-240VAC, 50-60 Hz
Physical specifications		Environment		
Mounting	Rackmount kit available (to be ordered separately)	Power consumption	12.46W, 49.3 BTU/hr (idle)	26.16W, 89.2 BTU/hr (full load)
Dimensions Width x Depth x Height	288 x 186.8 x 44 mm 11.38 x 7.35 x 1.73 inches	Operating temperature	0-40°C (operating)	-20 to +80°C (storage)
Weight	1.7 kg / 3.75 lbs (unpacked) 2.82 kg / 6.22 lbs (packed)	Humidity	10%-90%, non-condensing	
Safety Certifications				
Certifications		CE, FCC Class B, CB, VCCI, C-Tick, UL, CCC		

# SG Series Appliances - Medium

Whatever your deployment scenario, these appliances can handle multiple security solutions in every situation. The following diagrams show typical deployments in this range.



Scenario using SG Series appliances and RED for branch offices



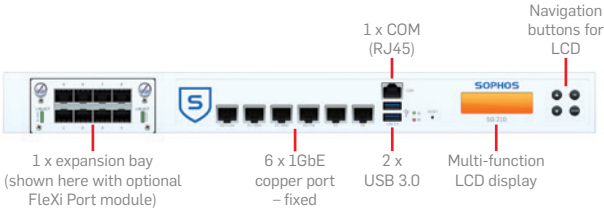
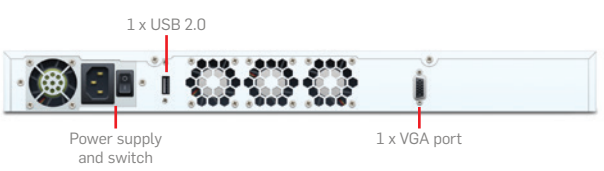
Deployment scenario with cluster of two SG 450 appliances



# SG Series Appliances: SG 210, SG 230

## Technical Specifications

The Sophos SG 210 and SG 230 are designed to protect small to mid-sized businesses and branch offices. Based on the latest Intel technology and equipped with 6 GbE copper ports plus one FleXi Port slot to configure with an optional module, they provide high flexibility and throughput at an excellent price-to-performance ratio. As with all models, you can dynamically cluster up to 10 of these appliances.

Front View	Performance	SG 210	SG 230
 <p>1 x expansion bay (shown here with optional FleXi Port module)</p> <p>6 x 1GbE copper port – fixed</p> <p>1 x COM (RJ45)</p> <p>2 x USB 3.0</p> <p>Multi-function LCD display</p> <p>Navigation buttons for LCD</p>	<b>Firewall throughput</b>	11 Gbps	13 Gbps
	<b>VPN throughput</b>	1 Gbps	2 Gbps
	<b>IPS throughput</b>	2 Gbps	3 Gbps
	<b>Antivirus throughput (proxy)</b>	500 Mbps	800 Mbps
	<b>Concurrent connections</b>	4,000,000	4,000,000
	<b>New connections/sec</b>	60,000	70,000
	<b>Maximum licensed users</b>	unrestricted	unrestricted
Back View	Physical interfaces		
 <p>1 x USB 2.0</p> <p>Power supply and switch</p> <p>1 x VGA port</p>	<b>Hard drive (local quarantine/logs)</b>	integrated HDD	integrated SSD
	<b>Ethernet interfaces (fixed)</b>	6 GE copper	6 GE copper
	<b>No. of FleXi Port slots</b>	1	1
	<b>FleXi Port modules (optional)</b>	8 port GE copper 8 port GE SFP 2 port 10 GE SFP+	8 port GE copper 8 port GE SFP 2 port 10 GE SFP+
	<b>I/O ports</b>	2 x USB 3.0 (front) 1 x USB 2.0 (rear) 1 x COM (RJ45) (front) 1 x VGA (rear)	2 x USB 3.0 (front) 1 x USB 2.0 (rear) 1 x COM (RJ45) (front) 1 x VGA (rear)
	<b>Display</b>	Multi-function LCD module	Multi-function LCD module
	<b>Power supply</b>	Internal auto-ranging 110-240VAC, 50-60 Hz	Internal auto-ranging 110-240VAC, 50-60 Hz

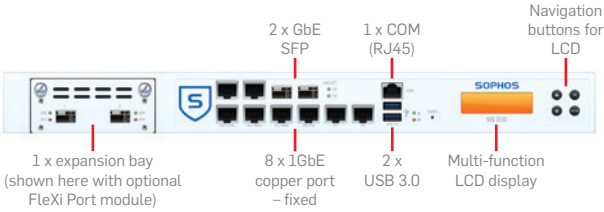
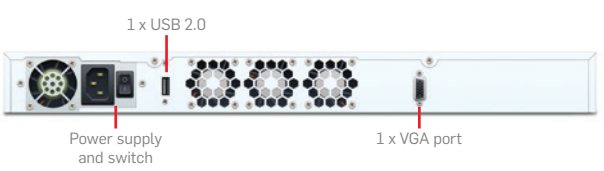
Physical specifications		Environment	
<b>Mounting</b>	1U rack mount (2 rackmount ears included)	<b>Power consumption</b>	20W, 69 BTU/hr (idle) SG 210: 30W, 103 BTU/hr (full load) SG 230: 34W, 117 BTU/hr (full load)
<b>Dimensions Width x Depth x Height</b>	438 x 292 x 44mm 17.24 x 11.5 x 1.75 inches	<b>Operating temperature</b>	0-40°C (operating) -20 to +80°C (storage)
<b>Weight</b>	5.1 Kg / 11.24 lbs (unpacked) 7.05 Kg / 15.54 lbs (packed)	<b>Humidity</b>	10%-90%, non-condensing

Safety Certifications	
<b>Certifications</b>	CE, FCC Class A, CB, VCCI, C-Tick, UL, CCC

# SG Series Appliances: SG 310, SG 330

## Technical Specifications

The Sophos SG 310 and SG 330 are scalable appliances suitable for distributed organizations or mid-sized companies. With solid-state drives for on-box reporting, logs and spam quarantine, they're highly responsive even in high traffic environments. Each model is equipped with 8 GbE copper ports, 2 GbE SFP fiber ports plus one FleXi Port slot to configure with an optional module. They provide optimal performance and flexibility.

Front View	Performance	SG 310	SG 330
 <p>1 x expansion bay (shown here with optional FleXi Port module)</p> <p>8 x 1GbE copper port – fixed</p> <p>2 x GbE SFP</p> <p>1 x COM (RJ45)</p> <p>2 x USB 3.0</p> <p>Multi-function LCD display</p> <p>Navigation buttons for LCD</p>	<b>Firewall throughput</b>	17 Gbps	20 Gbps
	<b>VPN throughput</b>	3 Gbps	4 Gbps
	<b>IPS throughput</b>	5 Gbps	6 Gbps
	<b>Antivirus throughput (proxy)</b>	1.2 Gbps	1.5 Gbps
	<b>Concurrent connections</b>	6,000,000	6,000,000
	<b>New connections/sec</b>	100,000	120,000
	<b>Maximum licensed users</b>	unrestricted	unrestricted
Back View	Physical interfaces		
 <p>1 x USB 2.0</p> <p>Power supply and switch</p> <p>1 x VGA port</p>	<b>Hard drive (local quarantine/logs)</b>	integrated SSD	integrated SSD
	<b>Ethernet interfaces (fixed)</b>	8 GE copper 2 GE SFP	8 GE copper 2 GE SFP
	<b>No. of FleXi Port slots</b>	1	1
	<b>FleXi Port modules (optional)</b>	8 port GE copper 8 port GE SFP 2 port 10 GE SFP+	8 port GE copper 8 port GE SFP 2 port 10 GE SFP+
	<b>I/O ports</b>	2 x USB 3.0 (front) 1 x USB 2.0 (rear) 1 x COM (RJ45) (front) 1 x VGA (rear)	2 x USB 3.0 (front) 1 x USB 2.0 (rear) 1 x COM (RJ45) (front) 1 x VGA (rear)
	<b>Display</b>	Multi-function LCD module	Multi-function LCD module
	<b>Power supply</b>	Internal auto-ranging 110-240VAC, 50-60 Hz	Internal auto-ranging 110-240VAC, 50-60 Hz

Physical specifications		Environment	
<b>Mounting</b>	1U rack mount (2 rackmount ears included)	<b>Power consumption</b>	SG 310: 29W, 98 BTU/hr (idle) 56W, 191 BTU/hr (full load) SG 330: 32W, 110 BTU/hr (idle) 50W, 169 BTU/hr (full load)
<b>Dimensions Width x Depth x Height</b>	438 x 292 x 44mm 17.24 x 11.5 x 1.75 inches	<b>Operating temperature</b>	0-40°C (operating) -20 to +80°C (storage)
<b>Weight</b>	5.2 Kg / 11.46 lbs (unpacked) 7.15 Kg / 15.76 lbs (packed)	<b>Humidity</b>	10%-90%, non-condensing

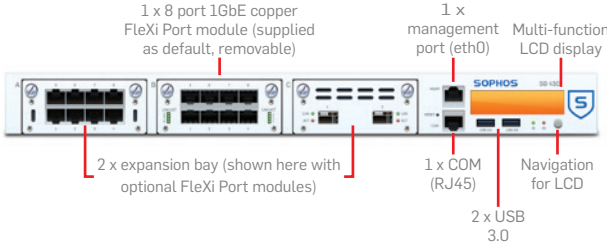

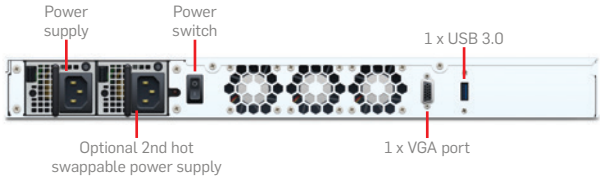
## Safety Certifications

<b>Certifications</b>	CE, FCC Class A, CB, VCCI, C-Tick, UL, CCC
-----------------------	--

# SG Series Appliances: SG 430, SG 450

## Technical Specifications

The Sophos SG 430 and SG 450 offer enterprise performance for distributed organizations or larger mid-sized companies. The connectivity options are second to none for rack mountable appliances, with each model coming equipped with a removable 8 GbE copper port module and 2 additional FleXi Port slots which you can configure with your choice of optional modules. For high-availability, the SG 450 also offers unparalleled redundancy features in a 1U appliance with a second SSD (RAID) integrated and an optional second power supply available.

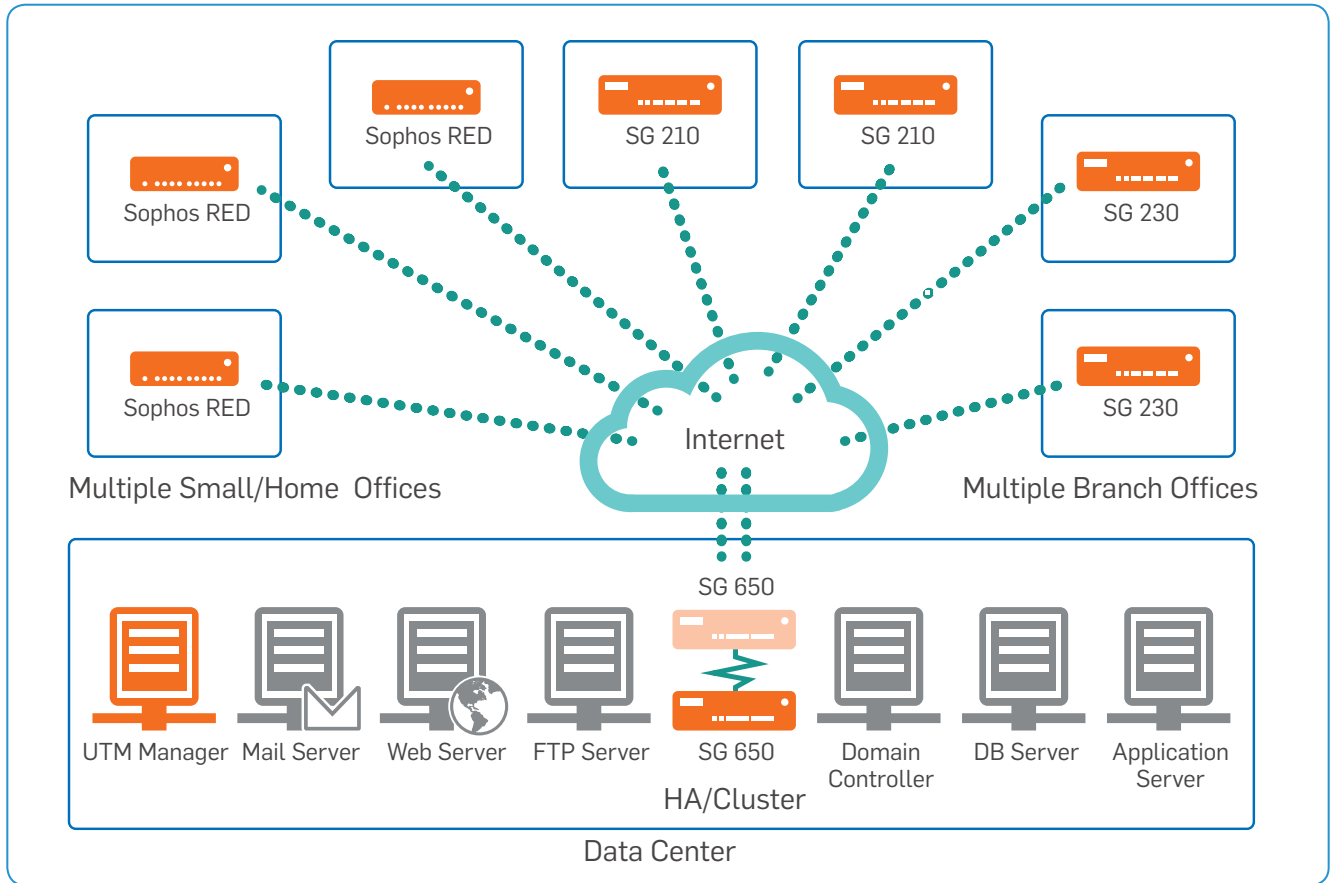
Front View	Performance	SG 430	SG 450
 <p>1 x 8 port 1GbE copper FleXi Port module (supplied as default, removable)</p> <p>1 x management port (eth0)</p> <p>Multi-function LCD display</p> <p>2 x expansion bay (shown here with optional FleXi Port modules)</p> <p>1 x COM (RJ45)</p> <p>Navigation for LCD</p> <p>2 x USB 3.0</p>	<b>Firewall throughput</b>	25 Gbps	27 Gbps
	<b>VPN throughput</b>	4 Gbps	5 Gbps
	<b>IPS throughput</b>	7 Gbps	8 Gbps
	<b>Antivirus throughput (proxy)</b>	2 Gbps	2.5 Gbps
	<b>Concurrent connections</b>	8,000,000	8,000,000
	<b>New connections/sec</b>	130,000	140,000
	<b>Maximum licensed users</b>	unrestricted	unrestricted
Back View SG 430	Physical interfaces		
 <p>1 x USB 3.0</p> <p>Power supply and switch</p> <p>1 x VGA port</p>	<b>Hard drive (local quarantine/logs)</b>	integrated SSD	integrated SSD x2
	<b>Ethernet interfaces (removable)</b>	8 GE copper	8 GE copper
	<b>No. of FleXi Port slots</b>	3	3
 <p>Power supply</p> <p>Power switch</p> <p>Optional 2nd hot swappable power supply</p> <p>1 x USB 3.0</p> <p>1 x VGA port</p>	<b>FleXi Port modules (optional)</b>	8 port GE copper 8 port GE SFP 2 port 10 GE SFP+	8 port GE copper 8 port GE SFP 2 port 10 GE SFP+
	<b>I/O ports</b>	2 x USB 3.0 (front) 1 x USB 2.0 (rear) 1 x COM (RJ45) (front) 1 x VGA (rear)	2 x USB 3.0 (front) 1 x USB 2.0 (rear) 1 x COM (RJ45) (front) 1 x VGA (rear)
	<b>Display</b>	Multi-function LCD module	Multi-function LCD module
	<b>Power supply</b>	Internal auto-ranging 110-240VAC, 50-60 Hz	Internal auto-ranging 110-240VAC, 50-60 Hz Hot Swap Redundant PSU optional

Physical specifications		Environment	
<b>Mounting</b>	1U sliding rails (included)	<b>Power consumption</b>	SG 430: 23W, 78 BTU/hr (idle) 123W, 419 BTU/hr (full load) SG 450: 22W, 75 BTU/hr (idle) 125W, 429 BTU/hr (full load)
<b>Dimensions Width x Depth x Height</b>	438 x 483 x 44mm 17.24 x 19 x 1.75 inches	<b>Operating temperature</b>	0-40°C (operating) -20 to +80°C (storage)
<b>Weight</b>	SG 430: 9.5 kg / 20.94 lbs (unpacked) 12.3 kg / 27.11 lbs (packed) SG 450: 10.5 kg / 23.15 lbs (unpacked) 13.3 kg / 29.32 lbs (packed)	<b>Humidity</b>	10%-90%, non-condensing

Safety Certifications	
<b>Certifications</b>	CE, FCC Class A, CB, VCCI, C-Tick, UL, CCC

# SG Series Appliances - Large

These 2U firewalls offer the ultimate in performance and connectivity for the most demanding deployment scenarios. The following diagram shows a typical deployment in this range and demonstrates their scalability which is ideally suited for larger distributed organizations.

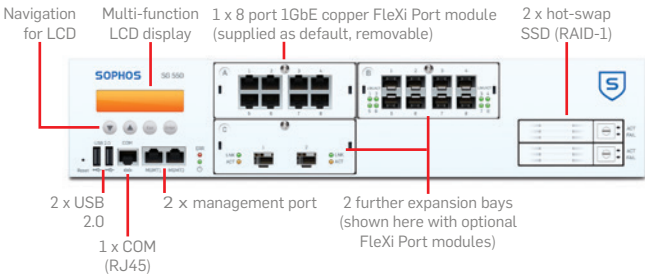
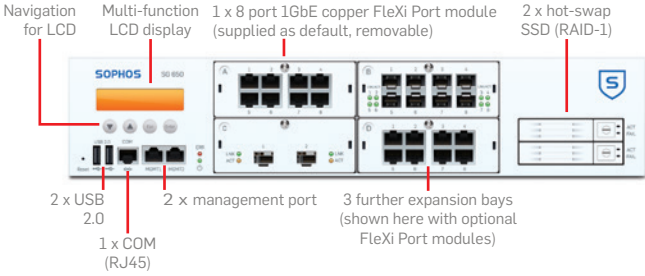
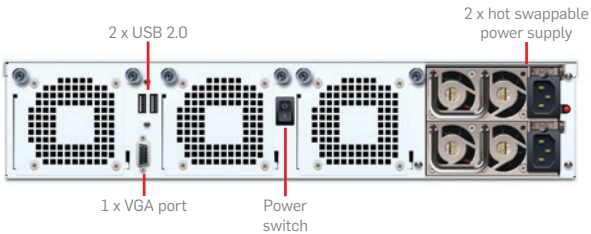


Deployment scenario showing a cluster of two SG 650 appliances as part of a large distributed organization with Sophos REDs to protect small or home offices and other SG appliances to protect branch offices

# SG Series Appliances: SG 550, SG 650

## Technical Specifications

The Sophos SG 550 and SG 650 are high-performance firewalls equipped to provide protection for larger distributed organizations and data center environments. They offer the fastest Intel CPU technology available today to effortlessly handle use as an all-in-one solution or a powerful next-generation firewall. The models offer either 3 (SG 550) or 4 (SG 650) FleXi Port expansion bays to tailor your connectivity to your environment. An 8 port GbE copper module is supplied as a default. Hot-swappable dual SSDs and power supplies are standard redundancy features in this class. Cluster up to 10 of these appliances for larger deployments or simply add an additional appliance as a failover for high availability.

Front View SG 550		Performance	SG 550	SG 650
		<b>Firewall throughput</b>	40 Gbps	60 Gbps
		<b>VPN throughput</b>	8 Gbps	10 Gbps
		<b>IPS throughput</b>	12 Gbps	16 Gbps
		<b>Antivirus throughput (proxy)</b>	3.5 Gbps	5 Gbps
		<b>Concurrent connections</b>	12,000,000	20,000,000
		<b>New connections/sec</b>	200,000	220,000
		<b>Maximum licensed users</b>	unrestricted	unrestricted
Front View SG 650		Physical interfaces		
		<b>Hard drive (local quarantine/logs)</b>	2 x integrated hot-swap SSD (RAID)	2 x integrated hot-swap SSD (RAID)
		<b>Ethernet interfaces (removable)</b>	8 GE copper	8 GE copper
		<b>No. of FleXi Port slots</b>	3	4
		<b>FleXi Port modules (optional)</b>	8 port GE copper 8 port GE SFP 2 port 10 GE SFP+	8 port GE copper 8 port GE SFP 2 port 10 GE SFP+
Back View		<b>I/O ports</b>	2 x USB 2.0 (front) 2 x USB 2.0 (rear) 2 x Mgmt Port (eth0/eth1, front) 1 x COM (RJ45) (front) 1 x VGA (rear)	2 x USB 2.0 (front) 2 x USB 2.0 (rear) 2 x Mgmt Port (eth0/eth1, front) 1 x COM (RJ45) (front) 1 x VGA (rear)
		<b>Display</b>	Multi-function LCD module	Multi-function LCD module
		<b>Power supply</b>	2 x hot-swap internal auto-ranging 100-240VAC, 48-62 Hz PSU	2 x hot-swap internal auto-ranging 100-240VAC, 48-62 Hz PSU

Physical specifications		Environment	
<b>Mounting</b>	2U sliding rails (included)	<b>Power consumption</b>	221.44W, 755.11 BTU/hr (idle) 335.4W, 1143.71 BTU/hr (full load)
<b>Dimensions Width x Depth x Height</b>	432.4 x 580 x 88 mm 17.02 x 22.83 x 3.46 inches	<b>Operating temperature</b>	0-40°C (operating) -20 to +75°C (storage)
<b>Weight</b>	18.54 kg / 40.87 lbs (unpacked) 28.8 kg / 63.49 lbs (packed)	<b>Humidity</b>	10%-90%, non-condensing

## Safety Certifications

<b>Certifications</b>	CE, FCC Class A, CB, VCCI, C-Tick, UL, CCC
-----------------------	--

# Flexible licensing options

## Total Protect bundles

Most Sophos customers choose our Total Protect bundles. They give you everything you need to secure your organization in one easy-to-manage license: an SG appliance, a FullGuard subscription, and your technical support.

## FullGuard

FullGuard combines all our core licenses in one cost-effective subscription for complete security: Essential Firewall, Network Protection, Web Protection, Email Protection, Wireless Protection and Web Server Protection.

## BasicGuard

Our BasicGuard subscription incorporates all the essential security features you need for your small business. Should you want to extend your protection even further, you can upgrade to a FullGuard license at any time. BasicGuard is only available with the SG 105, SG 115, SG 105w and SG 115w appliances.

## Individual modules

All our modules are also available as individual subscriptions. Simply choose the ones you need.

Modules	Licensing options		
	Individual subscriptions	BasicGuard	FullGuard
<b>Essential Firewall - Free</b> Network Firewall, NAT, Native Windows Remote Access	Yes	Full	Full
<b>Network Protection</b> IPSec/SSL, ATP, VPN, IPS, DoS Protection	Yes	Basic	Full
<b>Web Protection</b> URL Filtering, Application Control, Dual Engine Antivirus	Yes	Basic	Full
<b>Email Protection</b> Anti-spam, Email Encryption and DLP, Dual Engine Antivirus	Yes	Basic	Full
<b>Wireless Protection</b> Wireless Controller, Multi-SSID Support, Captive Portal	Yes	Basic	Full
<b>Webserver Protection</b> Web Application Firewall, Reverse Proxy, Antivirus	Yes	-	Full
<b>Endpoint Protection</b> Antivirus, HIPS, Device Control	Yes	Optional	Optional

## Extend your security

**Sophos RED** Simply secure your branch offices by forwarding all traffic to the central Sophos UTM. Installation requires no technical training and there is no ongoing maintenance.

**Sophos WiFi Access Points** Configurationless access points are instantly protected by the UTM, letting you create secure networks for your employees or guest hotspots for your visitors.

**VPN Clients** Secure SSL or IPsec VPNs provide mobile and home workers with secure remote access from any location at any time.

**Free UTM Manager** Centrally manage multiple UTM devices through IPsec VPN tunnels; deploy policies in just a few clicks.

## Sophos UTM Certifications



United Kingdom and Worldwide Sales  
Tel: +44 (0)8447 671131  
Email: sales@sophos.com

North American Sales  
Toll Free: 1-866-866-2802  
Email: nasales@sophos.com

Try it now for free

Register for a free 30-day evaluation  
at [sophos.com/try-utm](http://sophos.com/try-utm)

Australia and New Zealand Sales  
Tel: +61 2 9409 9100  
Email: sales@sophos.com.au

Asia Sales  
Tel: +65 62244168  
Email: salesasia@sophos.com